

The New *Elevate*™ Platform

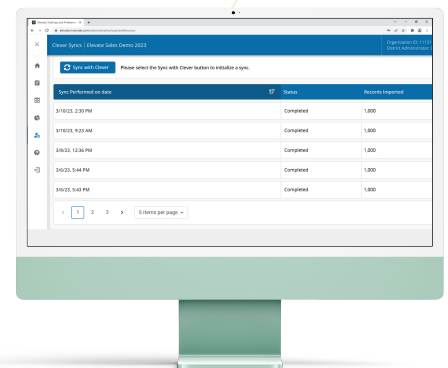
Elevate your instruction with an entirely transformed testing experience. We built Elevate from the ground up with all the features you asked for without the headaches.

Elevate will revolutionize your online testing program. Here's how:

Rostering

The *Elevate* way

- Connect to *Elevate* using Clever and roster your students in a flash



The old way

- Request SFTP credentials for secure file submissions
- Download location, staff, and student files
- Complete each file
- Submit files for review through SFTP
- Receive feedback on errors
- Correct errors
- Resubmit file for processing
- Repeat until it comes back with no errors



- One of the most common questions we get from customers interested in online testing is “will it work with Clever”? We’re pleased to announce that the answer is now “yes”.
- The *Elevate* rostering process can be completed **in a matter of minutes** (saving you up to 2 weeks of time!) and includes the added benefit of optional **single sign-on with Clever**.



Test Events and Test Assignments

The *Elevate* way

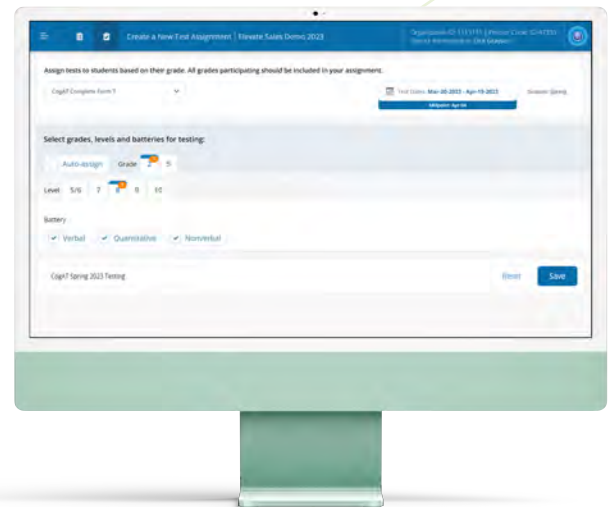
- Create an assignment with a specific start and end date and use the new **auto-assign feature** to pair the correct test levels to students based on their grade levels
- Students and educators can then access the assignment – *only while it is open*

The old way

- Create a test event and select options
- Create a separate test assignment, manually pairing grade levels to test levels
- Create test sessions for each subtest and lab period
- Assignments are then accessible to educators and proctors

● One of the top subjects of calls to tech support is assistance with test events and assignments. We're **eliminating test events altogether**, saving you the hassle of reaching out to tech support for assistance with test events and assignments.

● The ***Elevate*** process is streamlined with **fewer steps** and **more control** over access to the assessment resulting in greater accuracy with assigning the right tests at the right levels.





Proctoring

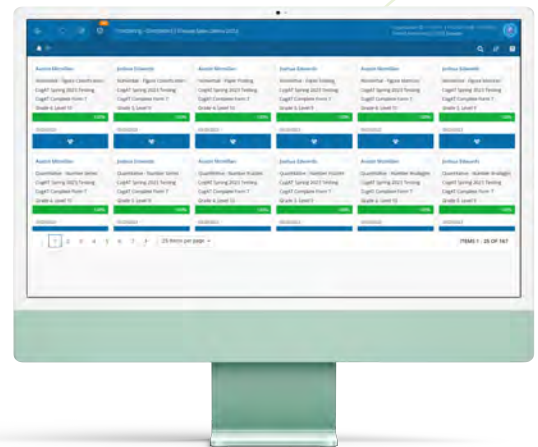
The *Elevate* way

- Each proctor has their own proctor room code, eliminating the need to create, save, and locate pre-created sessions for each subtest
- Test sessions are exclusively audio-led
- Option to extend time during and after testing.

The old way

- Create and save individual test sessions for each subtest, each with a unique test session code
- Locate, launch, and manage sessions
- Choose from proctor-led sessions (with the proctor needing to read the directions) or audio-led sessions
- Option to extend time for students existing only during testing

- Elevate** simplifies the proctoring process, allowing proctors to **focus on the students, not the technology**.
- Fewer proctoring steps will create less distraction (for both teachers and students) and foster a calm testing experience.
- Please note: *Headphones are required for all students.*

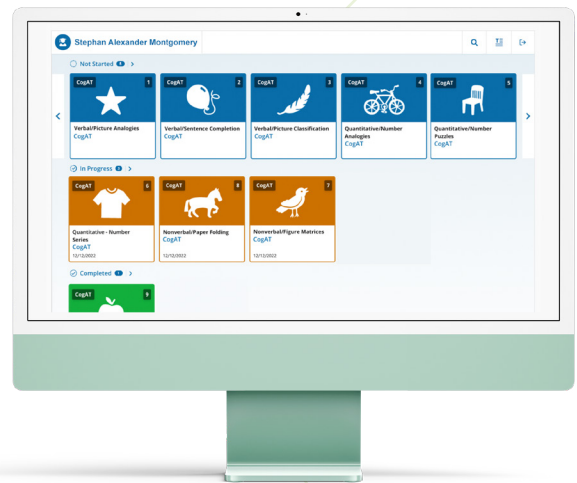




Student Testing

The *Elevate* way

- Each student has their own assignment dashboard, much like your learning management system (LMS)
- Students select a subtest to take based on easy-to-identify icons and directions from the educator



The old way

- Students are logged directly into a test session and moving students from subtest to subtest requires the proctor to “continue testing for all”

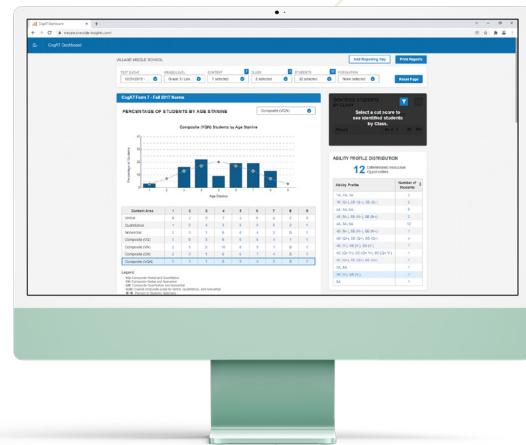
- Like proctors, students should be able to **focus on the test, not the technology.**
- Elevate*** offers a simple student interface that is **easy to navigate** and sets students up for success.



✓ | Scoring and Reporting

The *Elevate* way

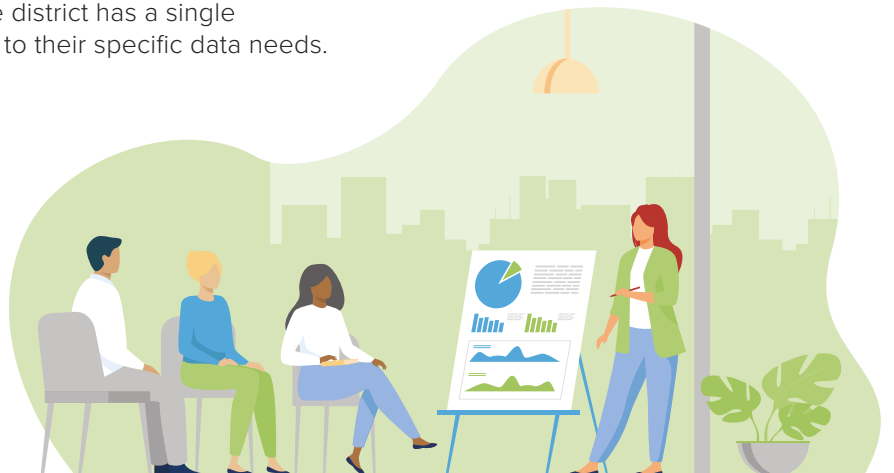
- Scoring turnaround is immediate
- Reporting consists of a single interactive dashboard built specifically for teachers, school, and district administrators



The old way

- Scoring turnaround is typically next day – sometimes longer
- Reporting consists of a series of prebuilt reports driven by several different menu selections, with an optional interactive dashboard built specifically for administrators and teachers

- Once testing is done, access to data needs to be **fast, intuitive,** and **versatile.**
- With ***Elevate***, each individual in the district has a single **interactive** report display targeted to their specific data needs.





Roles and Rights Management

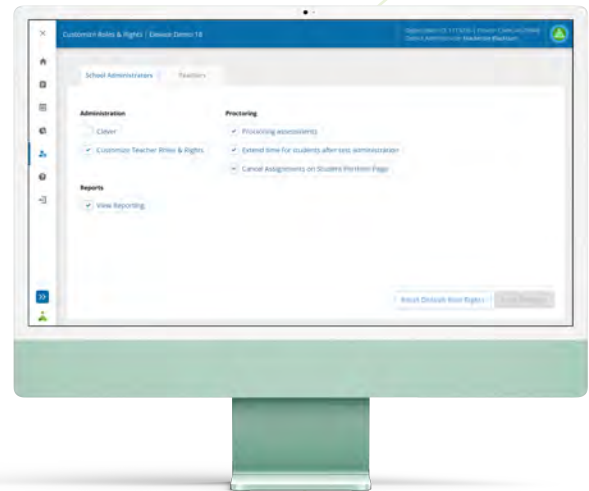
The *Elevate* way

- Choose between Teacher, School Administrator, and District Administrator
- Customize data rights either globally for those roles or for specific individuals based on:
 - Administrative rights for rostering
 - Ability to proctor assessments
 - Ability to view score reports

The old way

- Assign roles (account holder, administrator, teacher, proctor) to users based on interests in data rights/feature controls
- Roles offer little to no customization options

- **Elevate** streamlines the testing process at every level with a simpler yet more **flexible** user hierarchy.
- Choose between fewer roles and increased **customization** based on the interests of your specific testing program.





Settings and Preferences

The *Elevate* way

- Several global settings allow you to customize your assessment program
 - *Test assignment settings* like requiring in sequence test selection or allowing out-of-level testing
 - *Custom data privacy/security settings*

The old way

- A small number of settings are available when setting up test events

- **Elevate** gives you **control** over important data **privacy** and test program administrative options.
- You can **customize** the testing experience for proctors and students and have control over sensitive student data and **security**.

